



sewing patterns  
BY PATTY YOUNG

# POTTY GIRL A-LINE DRESS

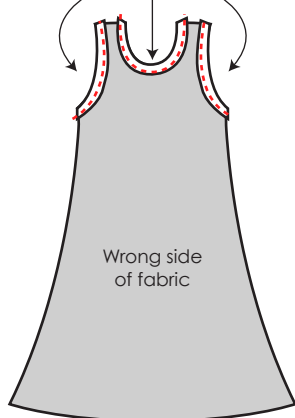
front & back panels  
cut 2 of stretch fabric

1/4" SEAM ALLOWANCE INCLUDED



{Makes a knit A-line dress  
for the 18" Rag Dolls  
in Patty Young's PLAYDATE fabric collection}

Hem arm and  
neck openings.  
(repeat for 2nd panel)



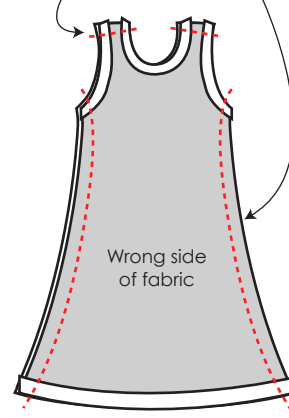
Wrong side  
of fabric

Hem  
dress bottom.  
(repeat for 2nd panel)



Wrong side  
of fabric

Place hemmed dress panels RST.  
Stitch across shoulders  
and sides to form dress.



Wrong side  
of fabric